

Face Plate and Boring Mill Jaws

- Face plate jaws furnished for tables with single radial slots
- Boring mill jaws furnished for tables with double parallel slots
- Face plate and boring mill jaws available with solid reversible jaws in sets of 4
- Face plate jaws sizes 6", 8"
- Boring mill jaws sizes 8", 10", 12", 14"

Face Plate Jaws For tables with Single Radial Slots



Series 10-063 Steel Bodies **Set of 4 with Solid Reversible Jaws**

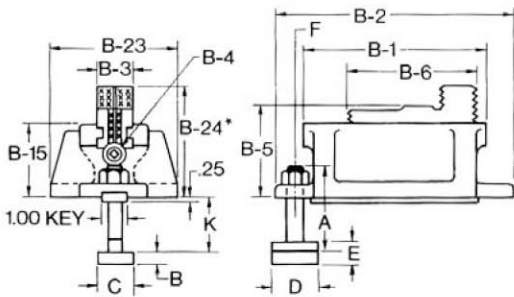
SIZE	FACE PLATE JAWS NO.	EST. GROSS WGT. LBS.
6	10-063-06-000D	160
8	10-063-08-000D	280

T-Bolt Dimensional Table

JAW SIZE	A	B	C	D	E	F	STD. K MIN.
4" THRU 8"	3.00	.53	1.31	1.75	.97	3/4-10	1.437-.750

Dimensional Table Series 10-063

JAW SIZE	6	8
B-1	6.25	8.25
B-2	8.50	10.50
B-3	1.69	1.69
B-4	1.17	1.17
B-5	4.38	4.38
B-6	5.00	5.00
B-15	3.75	3.75
B-23	5.00	5.50
B-24	5.25	5.25



Boring Mill Jaws For tables with Double Parallel Slots



Series 10-073 Steel Bodies **Set of 4 with Solid Reversible Jaws**

SIZE	BORING MILL JAW NO.	EST. GROSS WGT. LBS.
8	10-073-08-000B	260
10	10-073-10-000B	320
12	10-073-12-000B	360
14	10-073-14-000B	420

Dimensional Table Series 10-073

JAW SIZE	8	10	12	14
B-1	8.00	10.00	12.00	14.00
B-6	6.00	6.00	8.00	8.00
B-7	3.50	3.00	3.50	4.50

